



Public Health
Prevent. Promote. Protect.

Zanesville-Muskingum County

2025 Annual Report

EARLY INTERVENTION

Early Intervention (EI) is a coordinated, community-based service that promotes family-centered programs for children birth to three years of age and their families. EI provides service coordination, eligibility determination, identification of children with developmental delays, therapeutic interventions, and support as families navigate a system of supports for them and their child.

DURING THE GRANT YEAR, THE ZMCHD EI PROGRAM:

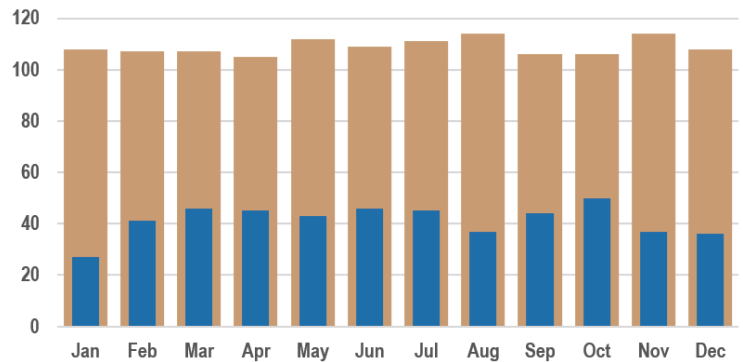
Physicians accounted for 44% of referrals to EI.



*The top referring physicians included Muskingum Valley Health Centers (90), PrimeCare Pediatrics (20), Zanesville Pediatrics (8). All other physicians in Muskingum County referred 10 children.

** Self-Referrals included referrals from within ZMCHD and parents who self-referred to the program.

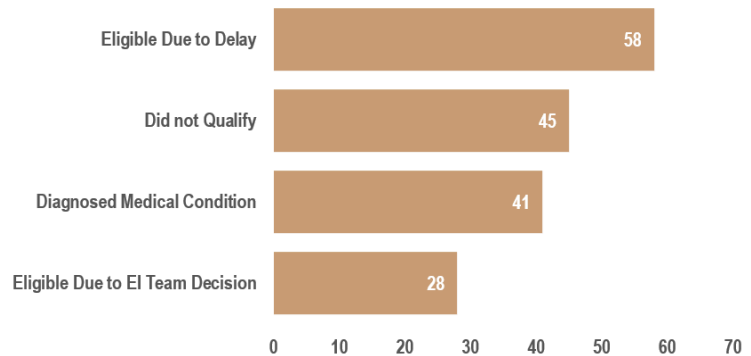
EI served over 105 enrolled children and over 27 in-process children each month.



EI Success Story

I want to highlight our Vision Specialist, Jan Holbein. Jan was a Developmental Specialist for the County Board several years ago and became a vision specialist through the Ohio School for the Blind. She has been the Primary Provider for a few of our EI kids who have vision diagnoses. We have one little girl that is in the process of transitioning to preschool. Jan has worked with the family since we got the referral shortly after her vision diagnosis was discovered. The things this little girl can do being fully blind are awe inspiring! She walks with a cane. She can navigate her world so well. She has started to learn letters in Braille, and will be able to expand on that in preschool with accommodations for her vision needs. The family, as well as her team, believe she would not be doing as well if she didn't have a dedicated Early Intervention Team!

Over 170 children were evaluated during the year.





Department of
Children & Youth

Help Me Grow Early Intervention

2025 Annual Report

EARLY INTERVENTION

EARLY INTERVENTION STAFF



Heather Rice, Early Intervention Program Manager/Supervisor.

She has been working in the field of Early Childhood for over 25 years. She started out as a Home Visitor providing parenting education, and quickly found a love in working with families with children who have developmental delays and need intervention. She has been managing the Early Intervention team since 2000.

"My favorite thing to celebrate is when a child no longer needs our services because of the coaching and support they received from our Early Intervention team!"



Angie Smith, Early Intervention Service Coordinator for 19 years.

She started working as a service coordinator right out of college. While doing her internship for college she worked in Fairfield County with toddlers up to high schoolers who had a developmental delay. It was then she realized her love for working with the littles. Angie not only provides supports and resources to her families, but she also was a parent of child who received services. She loves working with families and watching the progress kiddos make, no progress is too small.



Carolyn Scheifele, Early Intervention Service Coordinator.

She has been working in the field of Early Childhood for over 30 years. She started out as an Assistant Teacher at Head Start and worked her way up to Family Services Manager. She worked at Head Start for over 19 years. When at Head Start, she worked in the classroom and with the whole family in their home providing parenting education. She has been working in Early Intervention for eight years. Her passion is to help the families be all that they can be and to help give children what they need to be successful.



Kayla Smith, Early Intervention Service Coordinator since 2021.

She has always had a passion to work with children. After graduating from Muskingum University, she started working at a daycare. Although she loved working there, she felt in her heart that there was more she was meant to do to help children and families. As soon as she started at Early Intervention, Kayla realized how much she loved working with and helping children with developmental delays and disabilities.

"I love creating bonds and connections with my families and children, it is very important to me for families to know that I am always here for them."



Amber Wright is an Early Intervention Service Coordinator.

She has been a Service Coordinator for two years, but her history goes back to when her own son was enrolled with Early Intervention. The support and resources she was connected to through EI made a difference in her own family's life and she wanted to help make that difference for future families struggling with a child who is behind. Amber makes sure that every family she serves knows that slow progress is still progress!